



Fiscal Year 2020/21

Final Budget Revisions

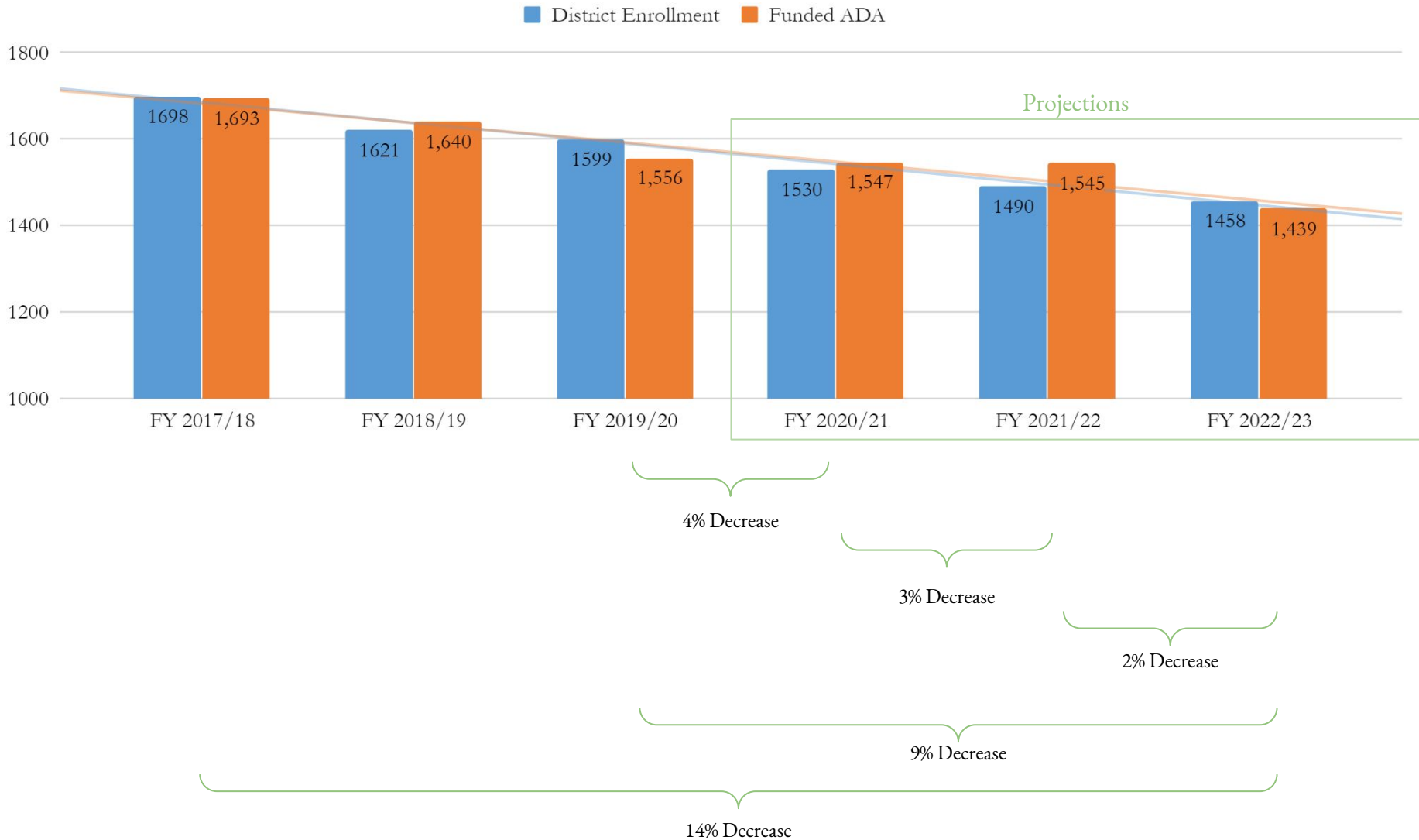
Chris J. Kim, Ed.D, MBA

Chief Business Official

ckim@busd.org



BELLEVUE UNION SCHOOL DISTRICT



Enrollment and Funded ADA



BELLEVUE UNION SCHOOL DISTRICT



	Actuals		Budgeted		Projection		Projection
	FY 2019/20	(+/-)	FY 2020/21	(+/-)	FY 2021/22	(+/-)	FY 2022/23
LCFF	\$18,978,631		\$18,876,267		\$18,799,798		\$17,631,537
Federal	\$1,479,419		\$3,570,984		\$1,715,984		\$1,715,984
State	\$2,620,318		\$1,652,236		\$1,506,211		\$1,506,211
Local & Contr.	\$314,947		\$352,315		\$352,315		\$352,315
Total	\$23,393,314	5%	\$24,451,802	-8%	\$22,374,308	-5%	\$21,206,047

Revenue



BELLEVUE UNION SCHOOL DISTRICT



	Actuals		Budgeted		Projection		Projection
	FY 2019/20	(+/-)	FY 2020/21	(+/-)	FY 2021/22	(+/-)	FY 2022/23
Certificated Salaries	\$7,559,742		\$7,941,325		\$7,876,445		\$7,616,015
Classified Salaries	\$2,756,502		\$2,809,937		\$2,828,787		\$2,808,587
Benefits	\$4,095,272		\$4,101,189		\$4,121,695		\$4,128,778
Books and Supplies	\$634,464		\$815,450		\$815,450		\$815,450
Services & Op. Exp.	\$7,087,704		\$9,766,506		\$7,911,506		\$7,911,506
Capital and Other	-\$24,300		\$2,000		\$2,000		\$2,000
Total	\$22,109,383	15%	\$25,436,407	-7%	\$23,555,882	-1%	\$23,282,336

Expenditures



BELLEVUE UNION SCHOOL DISTRICT



	Actuals	(+/-)	Budgeted	(+/-)	Projection	(+/-)	Projection
	FY 2019/20		FY 2020/21		FY 2021/22		FY 2022/23
Beginning Balance	\$3,672,907		\$4,956,838		\$3,972,233		\$2,790,659
Revenue	\$23,393,314		\$24,451,802		\$22,374,308		\$21,206,047
Expenditures	\$22,109,383		\$25,436,407		\$23,555,882		\$23,282,336
Net	\$1,283,931		-\$984,604		-\$1,181,574		-\$2,076,288
Ending Balance	\$4,956,838	-20%	\$3,972,233	-30%	\$2,790,659	-74%	\$714,371

Net Operating Deficits



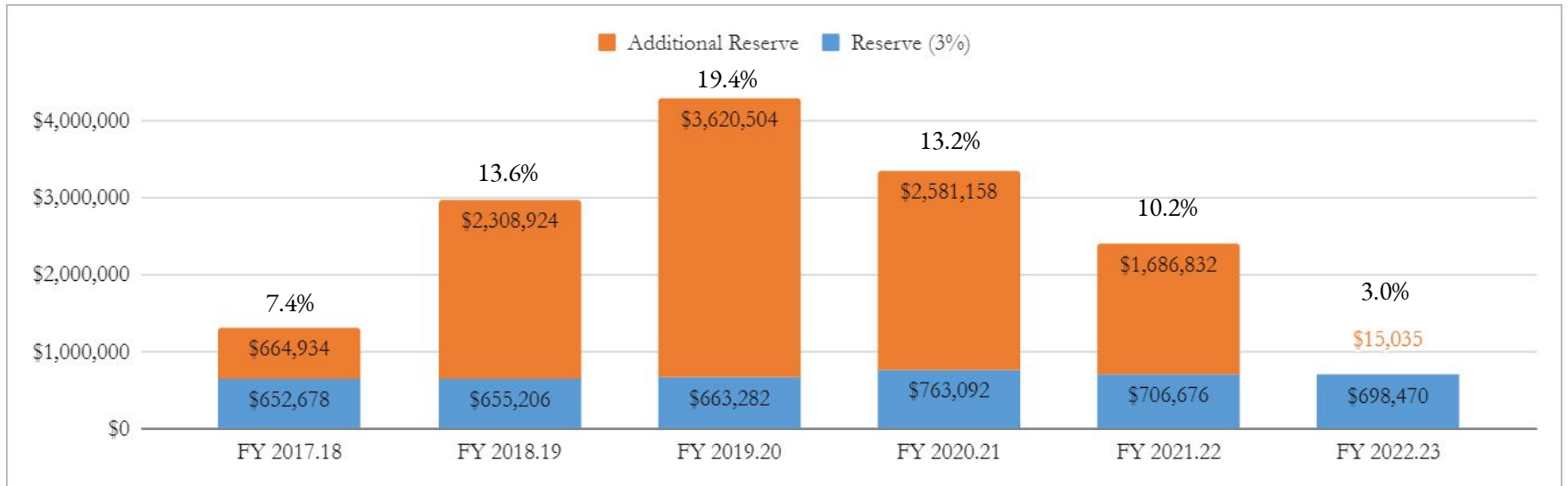
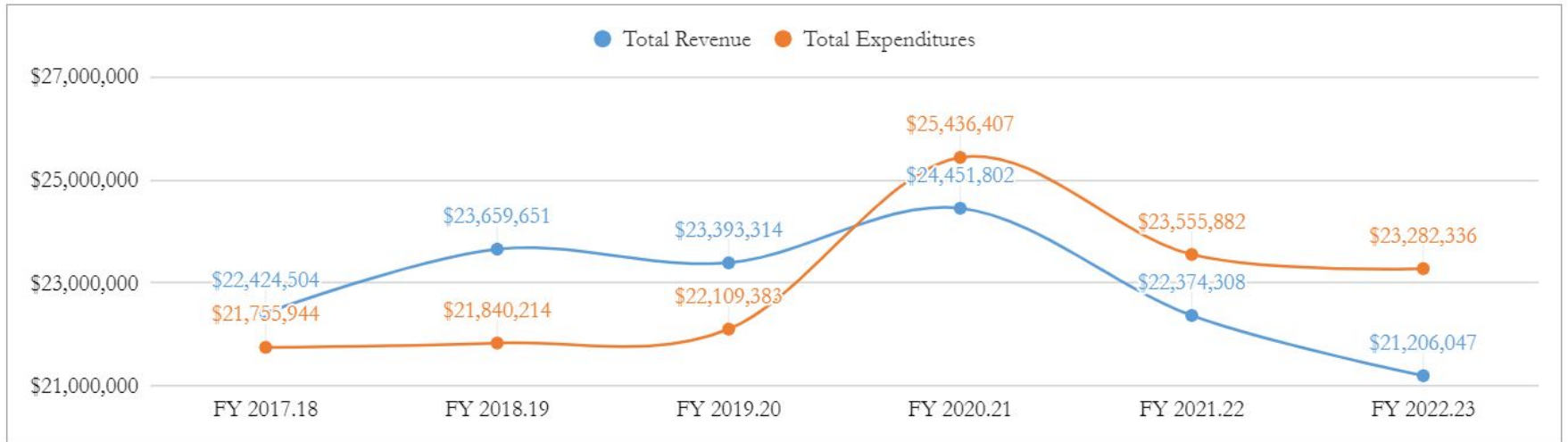
BELLEVUE UNION SCHOOL DISTRICT



	Actuals	(+/-)	Budgeted	(+/-)	Projection	(+/-)	Projection
	FY 2019/20		FY 2020/21		FY 2021/22		FY 2022/23
<i>Revolving Cash</i>	\$2,500						
Restricted	\$670,552		\$627,983		\$397,151		\$865
Reserve (3%)	\$663,282		\$763,092		\$706,676		\$698,470
Additional Reserve	\$3,620,504		\$2,581,158		\$1,686,832		\$15,035
Total	\$4,956,838	-20%	\$3,972,233	-30%	\$2,790,659	-74%	\$714,371



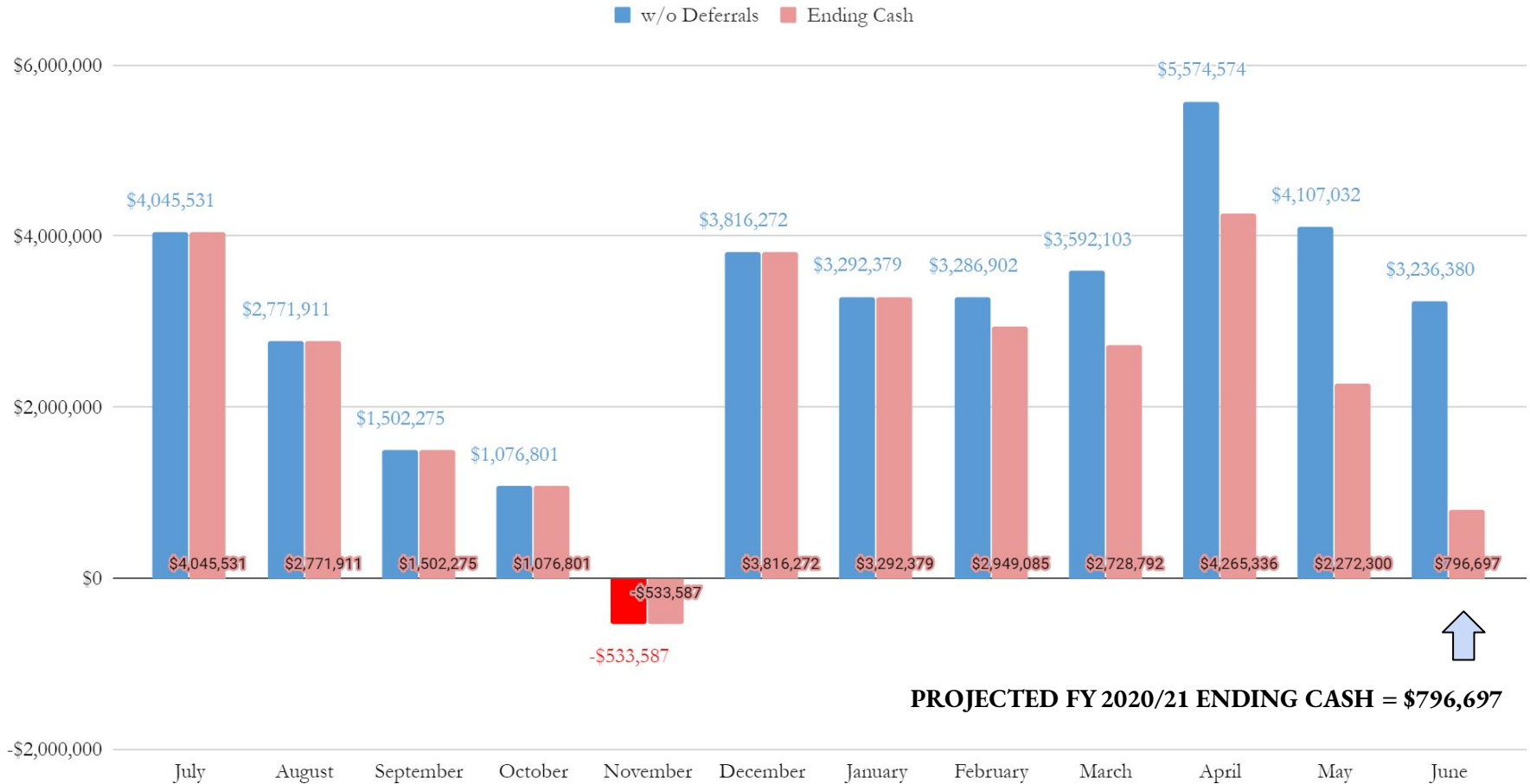
BELLEVUE UNION SCHOOL DISTRICT



Trendlines



BELLEVUE UNION SCHOOL DISTRICT





Future Considerations:

Substantive Decline in Student Enrollment Leading to Year over Year Operating Deficits

Projected \$2.9 Million in Cash Deferrals and Accruals in FY 2020/21

Allocation of One Time Learning Loss Mitigation Funding

Outcome of Negotiations with Collective Bargaining Units

Next Steps:

December 15th, 1st Interim (1st Quarter Review and Check on Budgetary Assumptions)
