



# Educator Effectiveness Block Grant

2021-2026



# **Educator Effectiveness Block Grant**

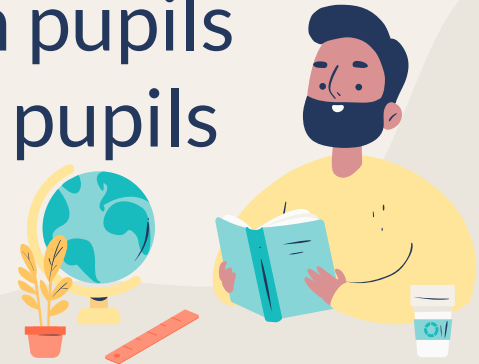
## **Funding for Professional Learning for:**

- **County Offices of Education**
- **School Districts**
- **Charter Schools**

# Educator Effectiveness Block Grant

## Professional Learning for:

- Teachers
- Administrators
- Paraprofessionals that work with pupils
- Classified staff that interact with pupils



# Requirements



## Plan

Develop and adopt plan and accompanying budget



## Coordinate

Coordinate with Title II allocation and spending



## Present

Present plan at a public meeting of the Governing Board



## Adopt

Ask the Board to adopt in a subsequent meeting by December 30, 2021



**\$352,682**

Allocations are based on an equal amount per full-time equivalent certificated staff, not to exceed the certificated staff count, and full-time equivalent classified staff.

# Allowable Uses

## Instructional Effectiveness and Improvement



Programs that lead to effective, standards-aligned instruction and improve instruction in literacy across all subject areas

## Coaching and mentoring



Staff serving in an instructional setting and beginning teacher or administrator induction

## Effective Language Acquisition

Instruction/education to support implement effective language acquisition programs for English learners.



# Allowable Uses

## School Climate



Practices to create a positive school climate, e.g., restorative justice, training around bias, PBIS, MTSS

## Social Emotional Learning

Strategies to implement social-emotional learning, trauma-informed practices, suicide prevention, access to mental health services and other that improve pupil well-being.



## Inclusive Practices

Strategies to improve inclusive practices, such as universal design for learning, best practices for early identification, development of IEPs



# Allowable Uses

## Early Childhood Education



Instruction, education and strategies for certificated and classified educators in early childhood education or childhood development.

## Ethnic Studies



New professional learning networks for educators not already engaged in an education-related professional learning network\*

## Pupil Reengagement

Practices and strategies that reengage pupils and lead to accelerated learning



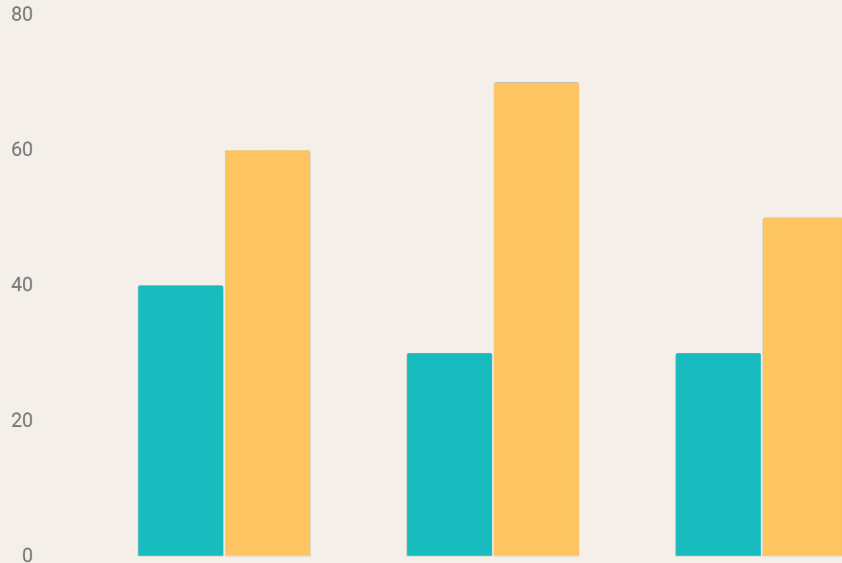
## Professional Learning Networks

New professional learning networks for educators not already engaged in an education-related professional learning network\*





# Monitoring & Reporting



## Report

- Report detailed expenditures to CDE by 9-30-26
- Report and monitor staff participation in professional development across length of grant

## Audit

Expenditures for each of the 10 focus areas are subject to annual audits

# **BUSD Plan - Focus Areas**

**Coaching and  
Mentoring**

**Instructional  
Effectiveness  
and  
Improvement**

**Pupil  
Reengagement**

**Inclusive  
Practices**

**Effective  
Language  
Acquisition**

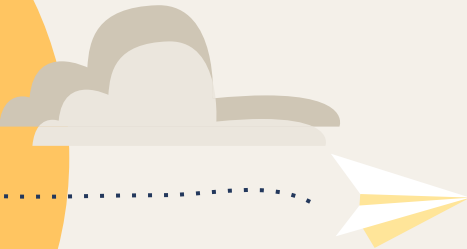
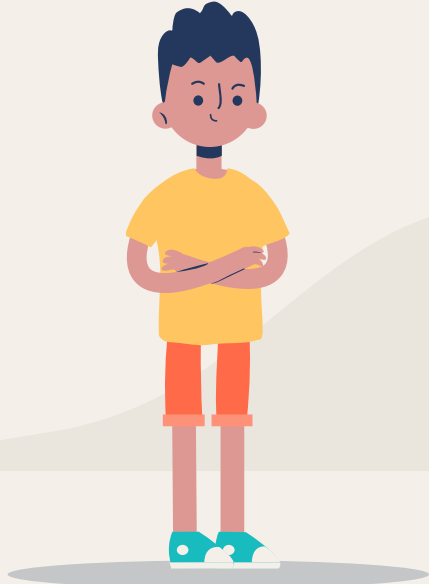
**Early  
Childhood  
Education**



**“It is unreasonable to ask teachers to successfully ensure high levels of learning for every student absent the resources and recognition they desperately need and deserve.”**



**- Janel Keating**



**Any Questions?**



**Thank  
You!**