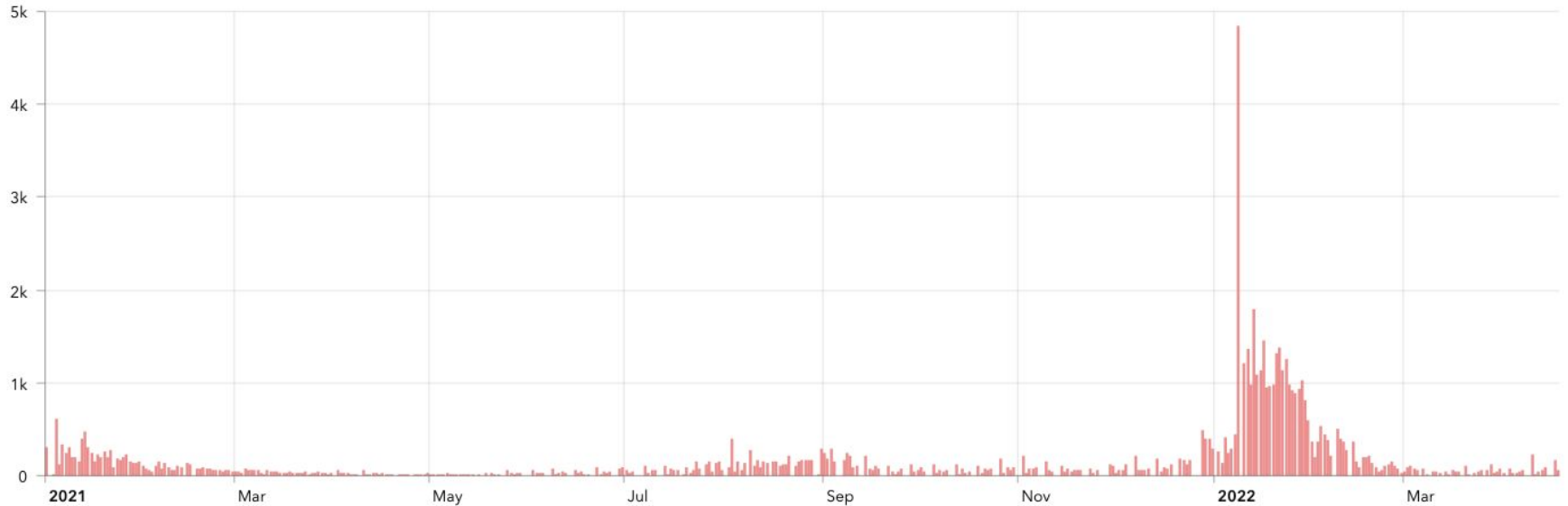


**Presentation to Bellevue Union School District Board of Trustees
Sonoma County COVID-19 Status Update
April 19, 2022**

By Tracy Whitaker, M.A.
Director of Student Services & BUSD COVID-19 Coordinator

Sonoma County COVID-19 Cases by Date

Sonoma County New Cases by Date - Since 1/1/21



All graphics and data for this presentation are taken from socoemergency.org.

New Case Numbers Last 10 Days

Date ▼	Active	New
4/18/2022	1,248	55
4/17/2022	1,313	168
4/16/2022	1,161	-
4/15/2022	1,161	-
4/14/2022	1,220	94
4/13/2022	1,170	57
4/12/2022	1,145	50
4/11/2022	1,105	20
4/10/2022	1,102	226
4/9/2022	986	-

BUSD Testing Numbers as of 04/04/22-04/18/22

362

Total Tests Released ⓘ

2

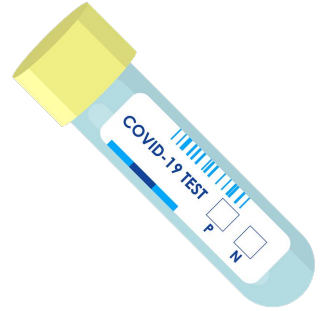
Positive Tests ⓘ

0.56%

Positive Test Rate ⓘ

These numbers only include those tests conducted through the schools PCR testing. **10 positive antigen tests.** We do not know how many antigen tests were administered as families may not report negative results. Overall testing positivity in the county is 4.4% per Sonoma County Department of Human Services, Lowest Quartile of the HPI 3.2%

Testing



- Continue to test those in extracurricular activities and field trips/special events
- Continue to have testing available for staff and students
- Continue to providing testing through the summer programs

Sonoma County TK-12 Cases

Student Cases per 100,000 population per week in Schools, Overall, and by Grade Level.

Week Start Date	TK-8 Case Rate	High School Case Rate	Overall Case Rate
4/3/2022	17.0	10.5	12.7
3/27/2022	72.4	92.8	86.0
3/20/2022	12.8	38.0	29.6
3/13/2022	255.8	867.4	663.9
3/6/2022	42.5	33.7	36.7

Overall case rate in Sonoma County 11.1 per 100,000 residents

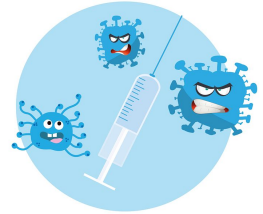
Vaccination Rates

Sonoma County Vaccination Rates

- 82% of the population in Sonoma County is vaccinated against COVID-19
- 47.8% of 5 to 11-year-olds are vaccinated
- 74.7% of 12 to 15-year-olds are vaccinated

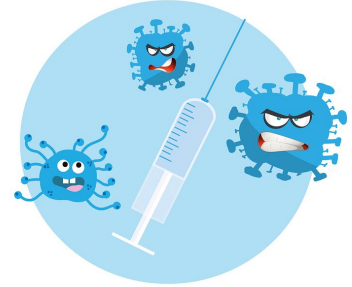
BUSD Vaccination Rates

- 82% of BUSD staff are confirmed as vaccinated & boosted
- 23.17% of BUSD students are confirmed as fully vaccinated



Vaccination Rates by Site

- ★ **MV: 16% are fully vaccinated**
- ★ **KS: 27.17% are fully vaccinated**
- ★ **BV: 20.7% are fully vaccinated**
- ★ **TM: 29.2% are fully vaccinated**



General Updates



- The vaccine mandate for *students* has been delayed to July 1, 2023. CDPH communicated this is due to the fact that the FDA has not fully approved the vaccine for the age group. (press release 04/14/22)
- Still awaiting guidance for employees vaccination mandates (CDPH/CalOSHA meeting 4/22/22)
- Unvaccinated/unboosted staff: Health order requiring twice a week testing was dropped. Once a week is the continued requirement.
- CalOSHA aligned with the CDPH regarding masking in the workplace. Masks are strongly recommended but not required.
- Meadow View vaccination clinic April 20, 2022, 4:00PM to 6:00PM
- If students are exposed (not positive) and asymptomatic, they may continue to attend school with a mask.

Thank you

Local considerations for maintaining or establishing universal indoor masking requirements in K-12 schools

When making the determination of whether a local universal indoor masking requirement should be maintained or established in K-12 school settings, CDPH recommends local health and education officials confer, with consideration of the factors listed below. ***Reliance on the composite situation, rather than any one single factor, is recommended when making determinations.***

Pandemic patterns and pathogen characteristics:

- ❑ local epidemiology, including COVID-19 case rates, test positivity, and hospitalization data;
- ❑ evidence suggestive of heightened *in-school* transmission (i.e., clear outbreaks in school and persistent transmission due to in-school exposures); and
- ❑ circulating variant characteristics, including concern regarding increased virulence, immune evasion, and/or treatment effectiveness.

Local considerations for maintaining or establishing universal indoor masking requirements in K-12 schools

Prevention, assessment, and treatment of COVID-19:

- school, LEA and/or community vaccination rates;
- indoor air quality at school-based facilities, including use of recommended strategies to improve ventilation and/or filtration;
- availability and accessibility of masks with good fit and filtration;
- availability and accessibility of prompt and regular COVID-19 testing; and
- ability to provide treatments for COVID-19 in a timely and equitable fashion as they become available for children.

Population characteristics:

- local demographics, including serving specialized populations of individuals at high risk of severe disease and/or immunocompromised populations, and any additional protective measures that can be implemented for those students;
- equity considerations, including serving communities disproportionately exposed to and impacted by COVID-19;
- staffing considerations, including the ability to maintain in-person instruction (e.g., monitoring for staff infections and exposures);
- and community input, including from student, parent/guardian, and staff populations